

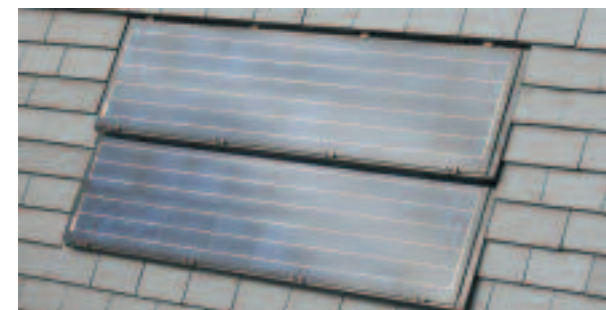
# Design Techniques

## Why Plain Tiles?

The small size of plain tiles provides the versatility for the architect to design roofscapes that contain infinite interest. Hips, valleys, dormer windows, towers and vertical cladding are roof features that embellish a gable to gable roof surface, producing shadows that break up potentially monotonous areas of roof. Large format tiles simply do not offer this flexibility.



Staffordshire Blue Tiles were chosen for this striking apartment building which won the Award for Architectural Merit at the 2008 Clay Roofing Awards.



Often solar panels detract from the aesthetic of the roof but our Staffordshire Blue plain clay tiles are a close colour match for the panels and by using special fittings, the solar panels can be fitted flush with the tiles. Fitted this way, the panels do not dominate or compromise the appearance of a roof, but they still provide all the benefits of generating your own energy.

## Ornamental Tiles

Complex roof details were common in Victorian architecture. Ornamental tiles, ridges and finials and intricately cut barge boards were used to break up hard straight edges.

Ornamental tiles were either laid in bands or in diamond patterns. They were used to add interest to large expanses of roof or vertical cladding. Dreadnought offer 4 ornamental patterns – fishtail, club, spade and arrowhead. A popular and visually attractive combination is the use of club and fishtail laid in the pattern – club/fishtail/club.



## Ornamental Ridges

Interest can also be added to the roofs by highlighting the ridgeline via the use of ornamental ridges. (See p.33).

## Finials

Finishing touches can be provided by the use of finials. These need not be elaborate and very often the occasional use of a scroll finial does add a subtle finish to a roof.

**Above:** Blue Brindle Tiles have been broken up by the use of ornamental banding used in 3 courses – Club/Fishtail/Club.



**Above:** This Victorian House was re-roofed using a mixture of Brown Brindle and Country Brown Tiles with Ornamental Club Tiles to match the original. Ornamental finials and ridge tiles were hand-made to match the original.

**Below:** The use of ornamental tiles and different colours for the vertical tiling produces a striking entrance to this supermarket.

